


CLASSICA
Quick Move-In Homes



the American Cottage Marin at Stephens Farm

8111 Farm Crossing Lane Huntersville, NC 28078

\$1,413,635

Owner's Suite	Homesite	MLS #	Beds	Baths	Garage
1st Floor	2	4142480	4	4	3-Car Side Load

More Information

Kyle Kirchhoff ♦ 704-727-4273 ♦ StephensFarm@classicahomes.com

Photos, Videos & More: www.classicahomes.com/SF2

PLEASE NOTE: All information is subject to change without notice. Please verify correct information at the time of purchase.



www.classicahomes.com



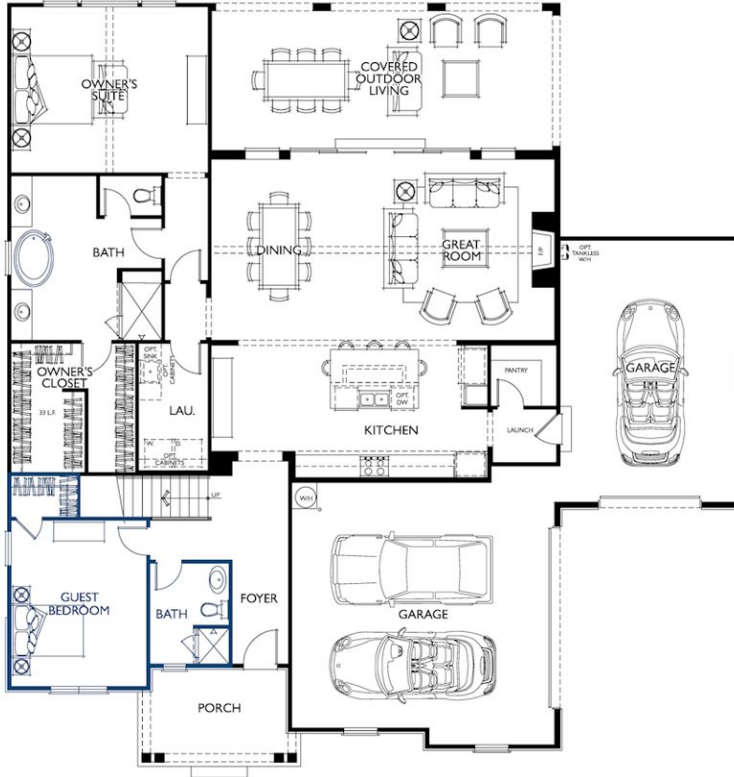


THE MARIN

8111 Farm Crossing Lane Huntersville, NC 28078 • Stephens Farm • Homesite 2
\$1,413,635 • www.classicahomes.com/SF2

Main Level

- Fabulous vaulted Great Room and Dining Area with stacking glass doors leading to the expansive Covered Outdoor Living
- Large Kitchen looks out to the Outdoor Covered Living Area with 36" gas range, and walk-in Pantry
- Private Guest Suite with full bath/shower
- Owner's Bath features a spa-like vibe with designer tile, large shower, and free standing tub



Second Level

- Bonus Room
- Two additional bedrooms upstairs with walk-in closets
- Expanded Unfinished Storage
- Second Laundry on the upper floor

