

  
CLASSICA  
*Quick Move-In Homes*



*the* Modern Farmhouse Newport II at Huntson Reserve

13506 Huntson Park Lane Huntersville, NC 28078

\$1,199,900

Owner's Suite	Homesite	MLS #	Beds	Baths	Garage
<b>2nd Floor</b>	<b>36</b>	<b>4142730</b>	<b>5</b>	<b>4</b>	<b>2-Car Front Load</b>

**More Information**

Kyle Kirchoff ♦ 803-560-5294 ♦ [HuntsonReserve@classicahomes.com](mailto:HuntsonReserve@classicahomes.com)

Photos, Videos & More: [www.classicahomes.com/HR36](http://www.classicahomes.com/HR36)

PLEASE NOTE: All information is subject to change without notice. Please verify correct information at the time of purchase.



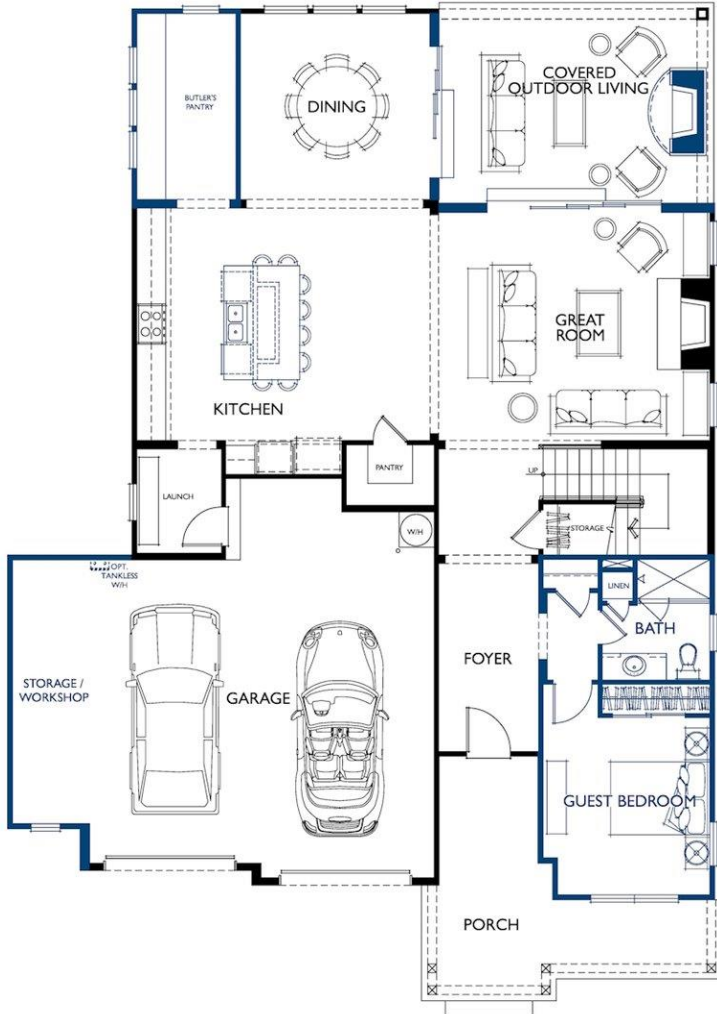


# THE NEWPORT II

13506 Huntson Park Lane Huntersville, NC 28078 • Huntson Reserve • Homesite 36  
Ready Oct 2024 • \$1,199,900 • [www.classicahomes.com/HR36](http://www.classicahomes.com/HR36)

## Main Level

- Kitchen overlooks the Great Room and has a wrap-around island with seating for 8!
- Light-filled Dining with windows on two sides and a Butler's Pantry off the Kitchen
- Fireplace in both the Great Room and Outdoor Living area.
- Private Guest Suite on the main level



## Second Level

- The upstairs Owner's Suite pampers you with a luxurious Owner's Bathroom with a freestanding tub, elegant shower and back-to-back vanities.
- The large Bonus Room is the ideal gathering space.
- Three more Bedrooms, two Baths, and a Laundry Room round out the second floor.

